



Caldwell Lake

Township of Lanark Highlands (Lavant)

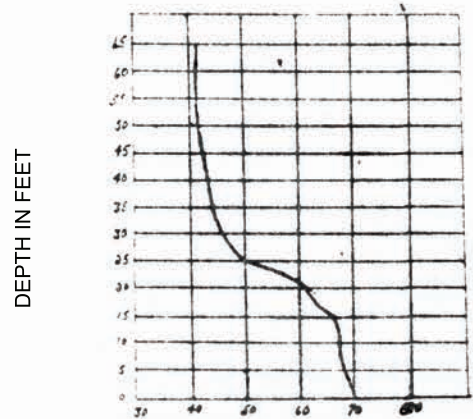
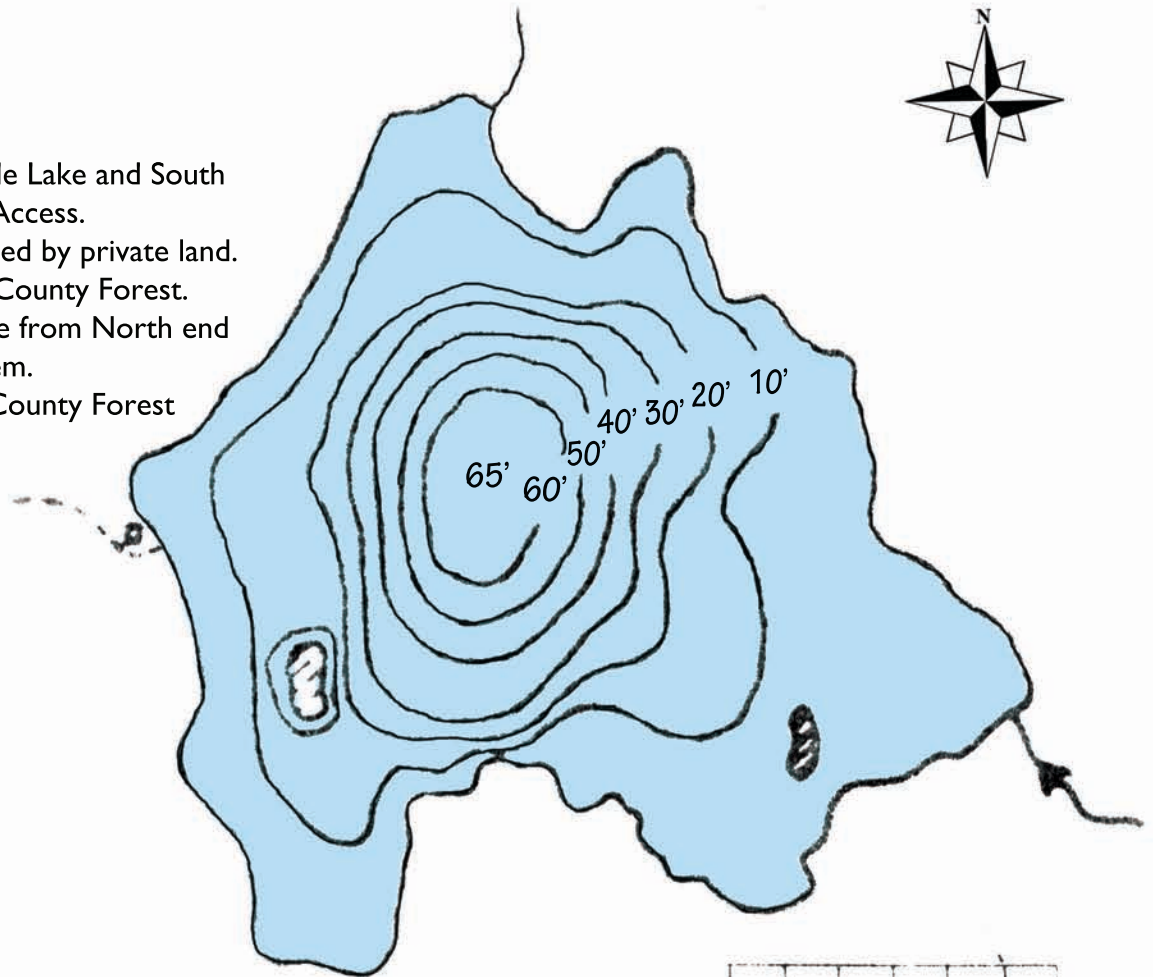
Surface Area: 42 acres
Maximum Depth: 50 ft.

Directions:

Located North West of Bottle Lake and South of Lavant Station. Unknown Access.
South half of lake is surrounded by private land. North half is surrounded by County Forest.
Canoe access may be possible from North end of Bottle Lake via creek system.
Other possible access from County Forest tertiary access roads.

Fish:

- Bullhead
- Bluntnose
- Minnow
- Northern Pike
- Rock Bass



This map is intended for fisheries management purposes only. It should not be used as a guide in navigation because no effort has been made to show the various schools and hazards which might occur between points of sounding.